

Partnership for
Sustainable Communities
National Brownfields Pilot

Indianapolis Smart
Growth District



UNITED
of

States
America

Indianapolis Smart Growth District

Background:

- Highly impacted neighborhood
 - Build upon local momentum
- Our Project
 - Creation of a Vision
 - Selection of location for targeted investment
 - Leverage funds



Indianapolis Smart Growth District

Challenges

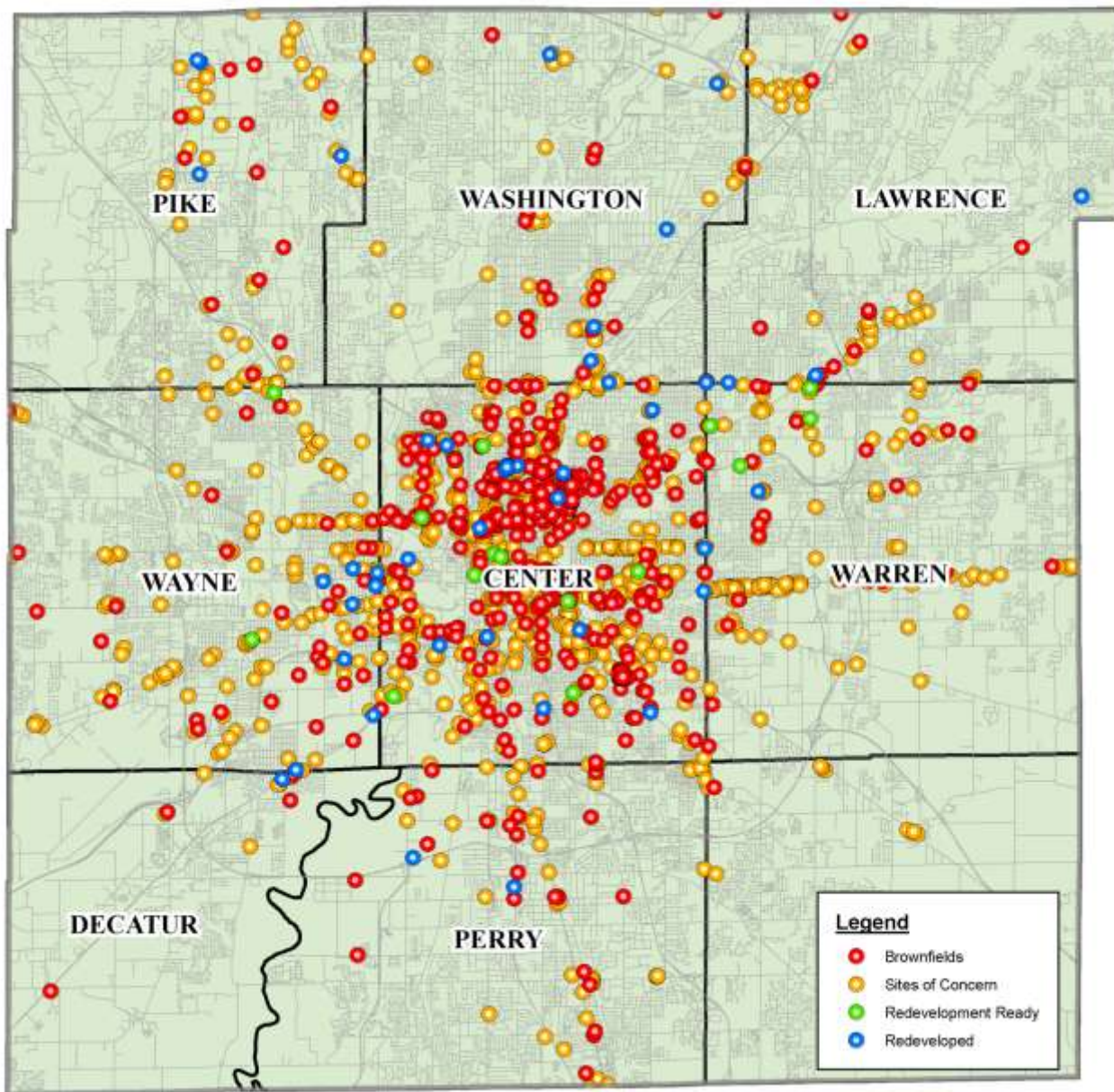
- Sheer number of unrelated efforts
- Low capacity in CDCs/little communication between neighborhood projects
- Perfect storm of legacy contamination, BF sites, and vacant properties with neighbors who feel over-planned or afraid of gentrification





***Challenge:
Nearly 16,000 Abandoned or Foreclosed Properties***

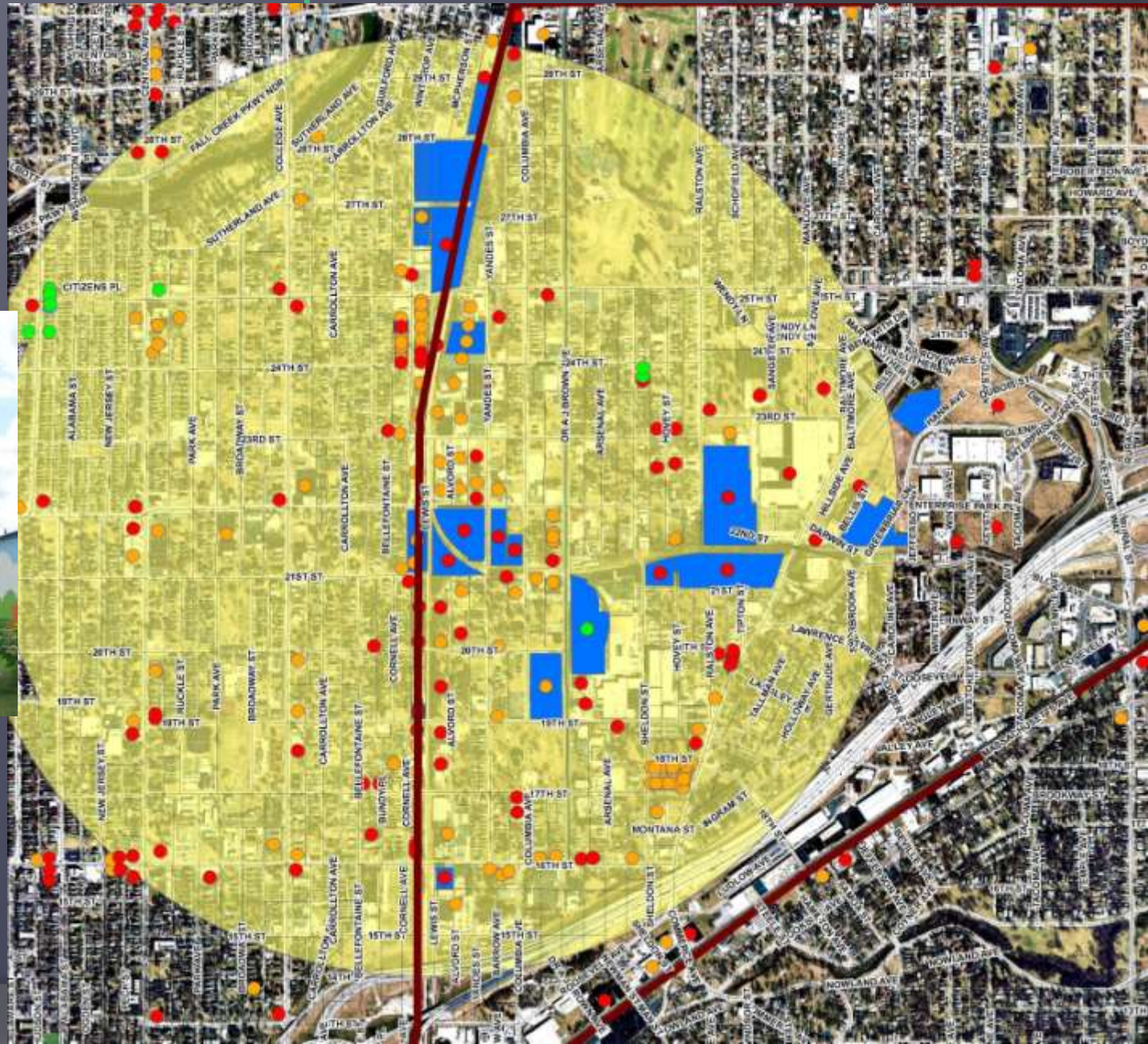
Brownfield Inventory - Site Identification



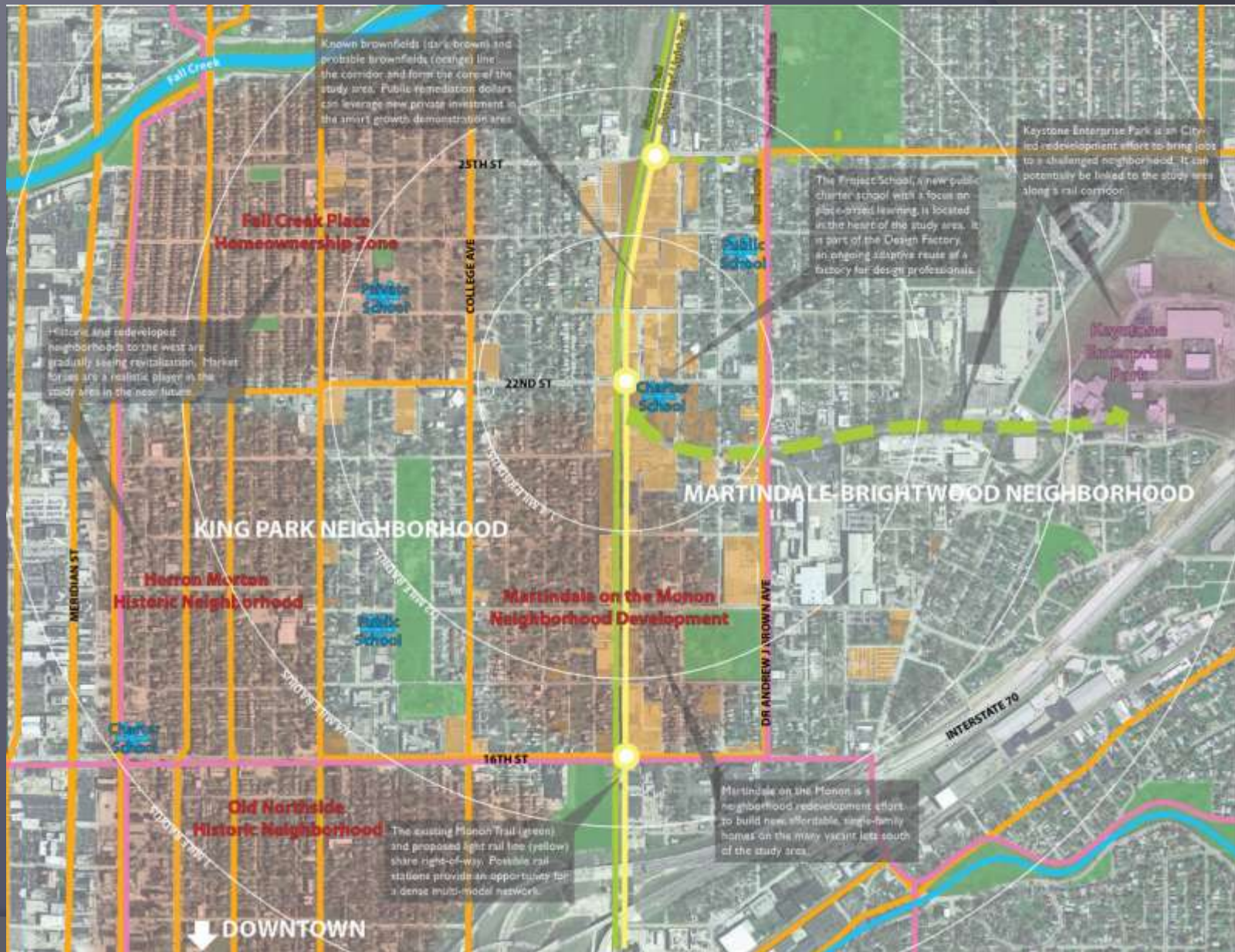
City of Indianapolis County-Wide Brownfield Site Inventory Project

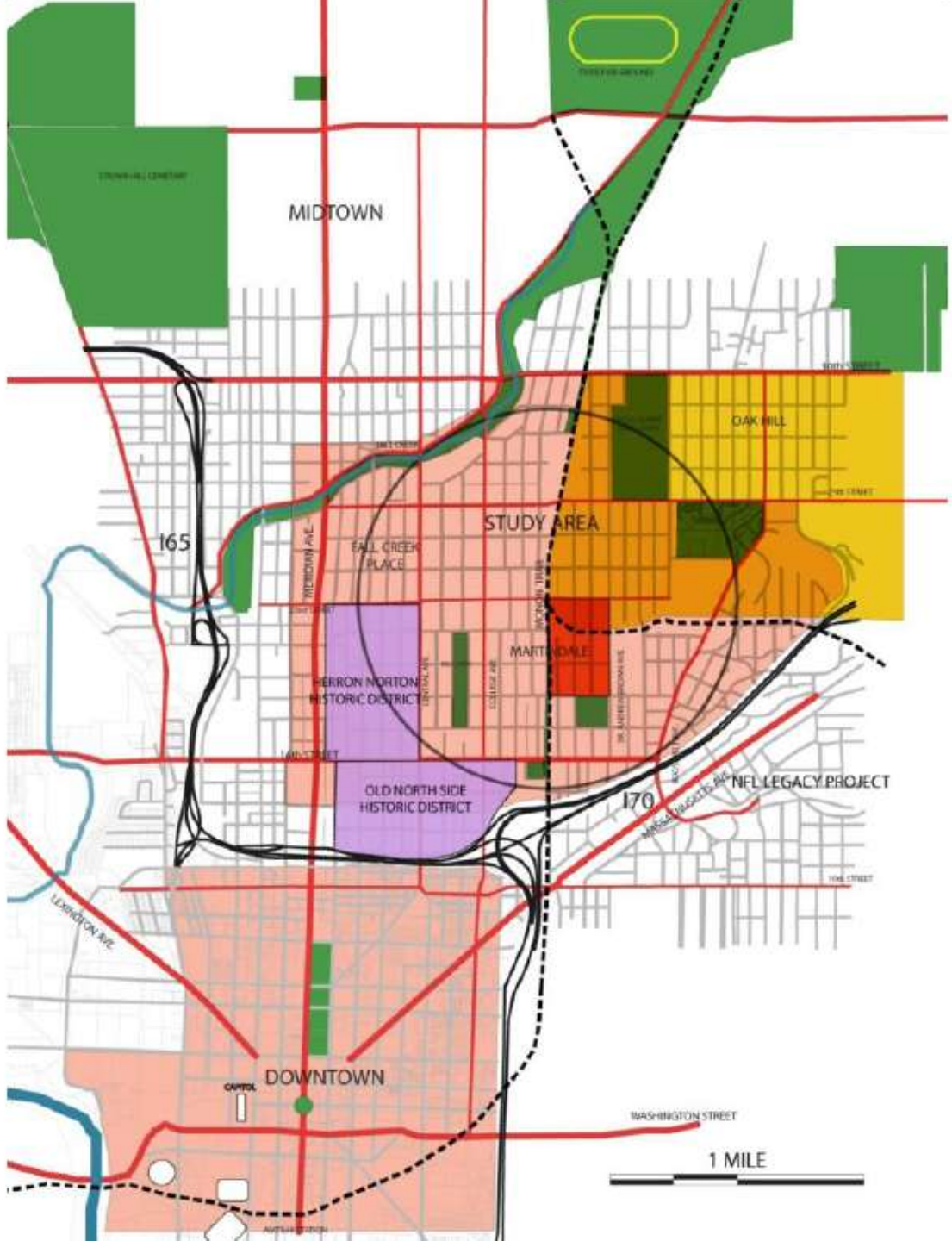


Smart Growth Redevelopment District



Smart Growth Redevelopment District





Indianapolis Smart Growth District

Advisory Committee

Comprised of many different stakeholder groups:

- City of Indianapolis:
 - Department of Metropolitan Development
 - Planning
 - Brownfields
 - Grants Management
 - Office of Sustainability
 - Mayor's Office of Economic Development
 - Parks and Recreation
 - Indianapolis MPO
- Community Development Corporations:
 - Martindale-Brightwood CDC
 - King Park Area CDC
- Federal Partners
 - EPA
 - HUD
 - FHWA
 - FTA
- State – Indiana Finance Authority/Indiana Brownfields Program
- Unofficial Committee Member – AIA Sustainable Design Action Team Implementation Committee

Indianapolis Smart Growth District

Solutions

- Advisory committee
- Use Monon Trail as a connector
- Revitalization Strategy focus was chosen by this committee, built around their needs and give specific implementation steps for successful outcomes



Smart Growth Redevelopment District

- Increase Density
- Increase Walkability
- Increase Transit Options
- Increase Livability
- Increase Sustainability



2008 Base Aerial



30TH ST + MONON



25TH ST + MONON



22TH ST + MONON



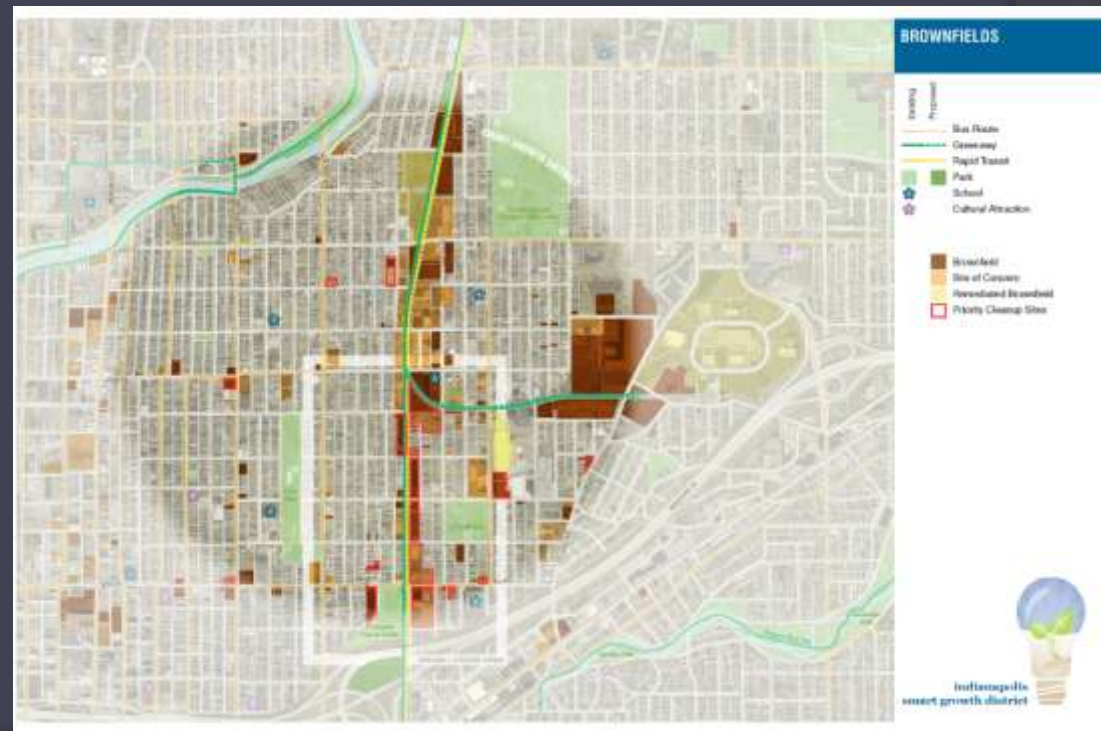
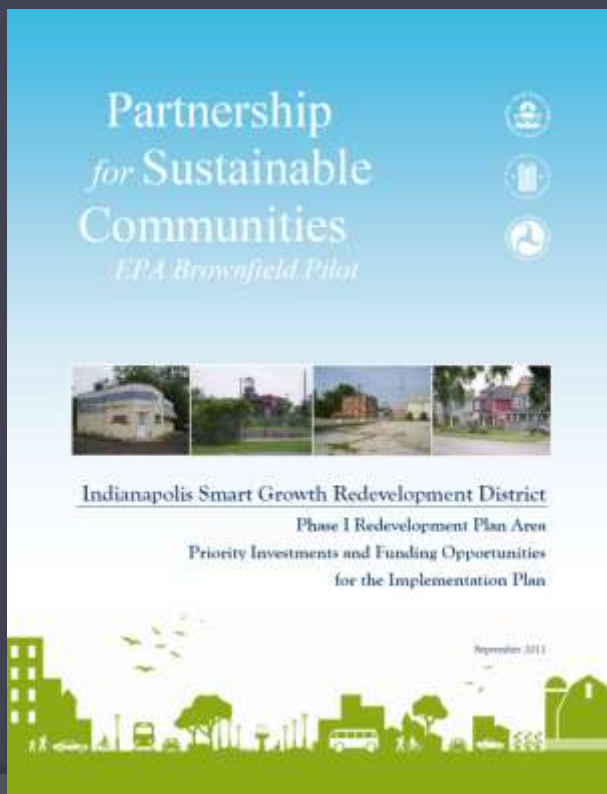
16TH ST + MONON



Indianapolis Smart Growth District

*Prioritizing Actions to
Support a Transit-Oriented
Future*
released December, 2010

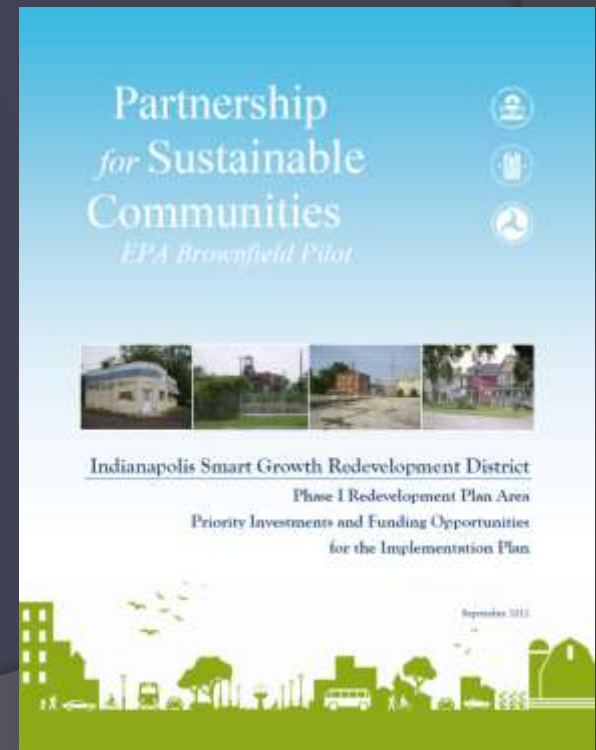
Next steps:
Site Selection, Prioritization, Implementation



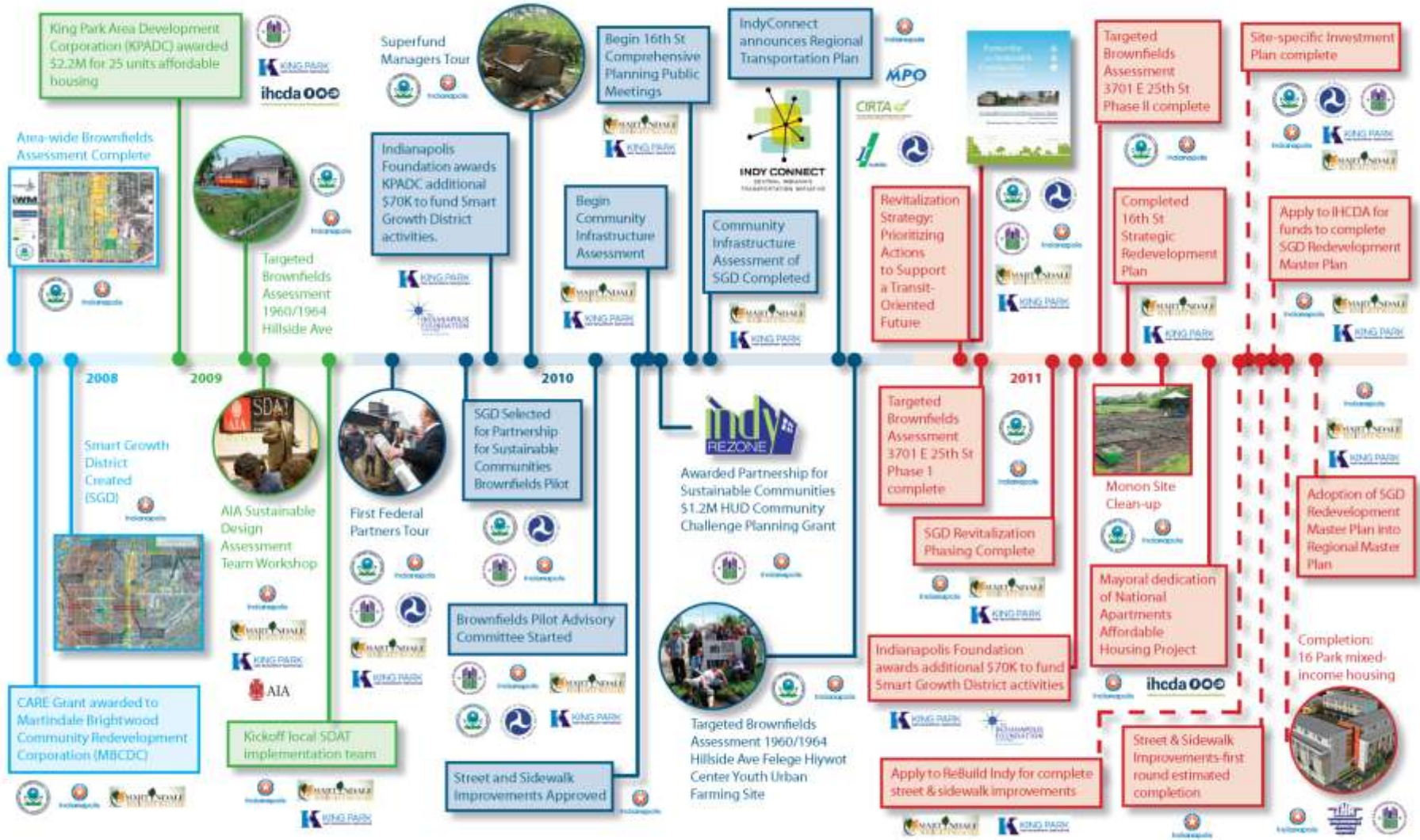
Indianapolis Smart Growth District

Financial Charrette

- Coordinated site selection, prioritization
- Presentation of 1 year and 5 year plan to potential “investors” and stakeholders: federal, state, local, non-profit, and foundations
- Breakout groups to refine priority funding strategies, possible sources



Partnership for Sustainable Communities Brownfields Pilot Project: Indiana Smart Growth District



Sustainable Communities Partnership – Key Lessons

- ⦿ Federal, state, local agency coordination
 - Implementation!
- ⦿ Funding is tip of iceberg
- ⦿ Cross-pollination of ideas:
 - Brownfields Redevelopment
 - Area Wide Planning Efforts
 - Green Stormwater Infrastructure
 - Housing and Transportation



Key outcomes of our Active Interagency Collaboration

- Joint implementation of projects
- Sharing of lessons from the field
- Identification of opportunities
 - Linking grant opportunities – Many Buckets!
 - Where can federal efforts enhance outcomes?
 - Where can new federal partners get involved?
 - Implementation!



SGRD Efforts Now in City Spotlight

Indianapolis smart growth redevelopment district partnership



Indianapolis Smart Growth District

Brownfields

- \$400K in Assessment grants

Business Growth

- Façade Grants
- Focus on small businesses
- City to designate portion of SGD a zoned Redevelopment Area



Indianapolis Smart Growth District

The Foundry



Foundry Provisions Coffee Shop

Indianapolis Smart Growth District

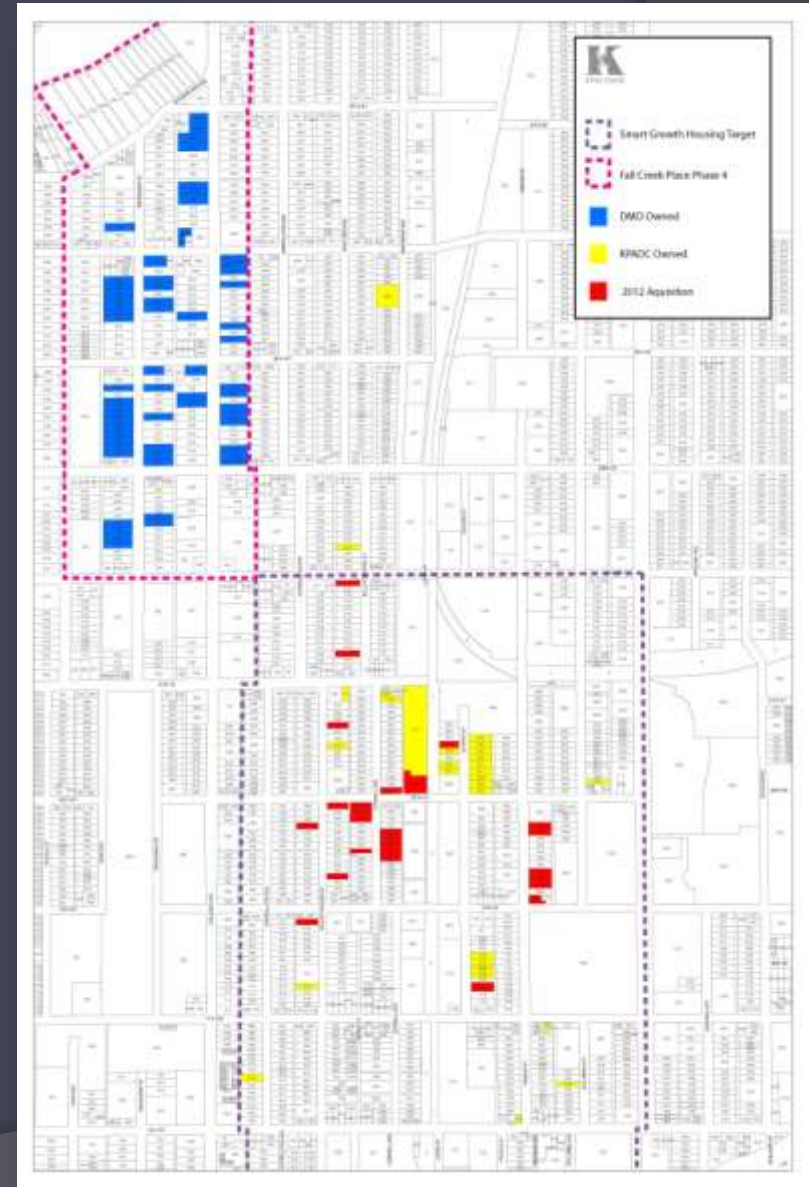


Omar Baking Factory to
Monon Arts Factory



PROMOTE EQUITABLE, AFFORDABLE HOUSING
The Partnership for Sustainable Communities

Indianapolis Smart Growth District



Indianapolis Smart Growth District

Parks

- Bicycle Boulevard and Civil Rights History Trail
- Bark Park
- Monon Gardens



Indianapolis Smart Growth District



Indianapolis Smart Growth District



Indianapolis Smart Growth District

Two years later:

- Over \$1.5M raised for implementation

Keys to success:

- EPA as convener
- Building capacity at the local level
- Working to create a vision
- Foundation support

Indianapolis Smart Growth District

“While cities across the country are tightening their belts, slashing budgets and cutting spending, it’s refreshing to see government agencies at all levels coordinating resources to spur development.

Since Indianapolis was selected as one of the cities for the Smart Growth project, already we are cleaning up former brownfields to make way for new housing opportunities and for sustainable projects that include urban gardens.

The multi-agency cooperation allows Indianapolis to invest funds for a maximum impact on the quality of life in the redeveloping area. I am optimistic about the results for this area in the near future.”

- Indianapolis Mayor Greg Ballard



Indianapolis Smart Growth District

National Attention from the White House



Indianapolis Smart Growth District



Learning More After Today

- US EPA – Brownfields

<http://www.epa.gov/brownfields/news/index.htm>

- Partnership for Sustainable Communities

<http://www.sustainablecommunities.gov/>

- Partnership Grants List

<http://www.sustainablecommunities.gov/pdf/leveragingPartnership.pdf>

- US EPA Region 5 Sustainable Communities

<http://epa.gov/region5/sustainable/>

Contact info

Jonathan Grosshans, AICP, LEED-AP
US EPA – Region 5
77 W Jackson Blvd, SM-7J
Chicago IL 60604
312-353-5617
Grosshans.jon@epa.gov

